

S332

Display and Data Logger



Smart Monitoring. Secure Data. Complete Control.

- Connectivity & Insights**
 Open connection to solutions
- 7" Touch-Screen**
 Live data and configuration
- Web Server**
 Plug & Play Access in local Network
- Audit Trails & User Mgmt**
 In alignment with FDA 21 CFR
- Modbus/RTU & TCP Master**
 Supporting 150 Channels
- Strong Protection**
 Rugged casing with IP 65 rating
- Data Logger**
 4.5 billion data points
- Alarm Management**
 Channel-specific alarm thresholds



Why S332?

- **One device, complete visibility:** Connect up to 150 Modbus/RTU channels and monitor compressed air data from one central unit.
- **Flexible sensor integration:** Supports SUTO iTEC and third-party sensors via Modbus/RTU, Modbus/TCP, analog, and digital inputs.
- **Compliance built in:** User management, audit trail, and electronic signature features support FDA 21 CFR Part 11 requirements.
- **Access from anywhere:** Integrated web server connection enable remote monitoring, configuration, export, and cloud upload

One Device. Complete Visibility.

Managing compressed air data across multiple measurement points can become complex and inefficient.

The S332 Display & Data Logger centralizes data acquisition, visualization, storage, and analysis into one powerful platform. Designed specifically for compressed air and industrial gas systems, the S332 delivers real-time visibility across the entire network — from generation to point of use.

Inputs



Communication Inputs

- Modbus/RTU
- Modbus/TCP
- Wireless (Through WTU)



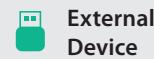
Analog & Digital Inputs

- 0/4 ... 20 mA
- 0 ... 10 V/0.5 ... 4.5 V
- Digital signal

Cloud Software



HMI/SCADA



External Device

Outputs



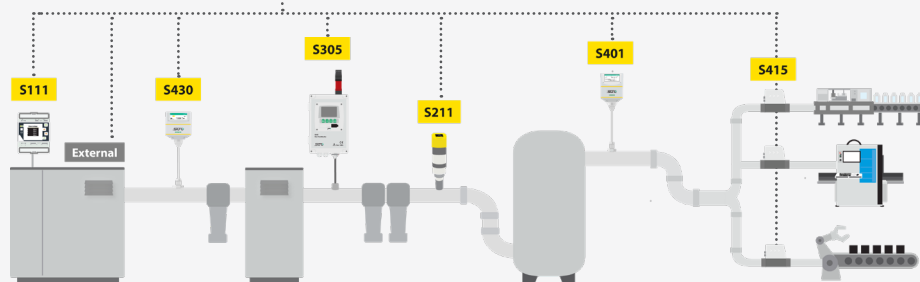
Data Outputs

- Modbus/RTU
- Modbus/TCP
- USB



Signal Outputs

- Alarm relays (2 built-in, up to 8 optional)
- Wireless (Through WTU)



Applications

The S332 is designed for industrial facilities that require centralized monitoring and reliable data logging across compressed air and gas systems.

Ideal for:

- Compressed air system operators
- Energy management projects
- Manufacturing & production facilities
- Pharmaceutical & regulated industries
- Factory-wide utility monitoring
- Multi-point sensor monitoring applications



Upgrade from S331

The S332 replaces the S331 with a larger 7" display, significantly expanded storage (10 GB vs. 3 GB), and full FDA 21 CFR Part 11 compliance features. Existing Modbus sensor networks connect without changes.

Feature	S332	S331
Screen Size	7"	5"
Screen type	Capacitive touchscreen	Resistive touchscreen
Resolution:	1280 x 800	800 x 480
Storage	10 GB	3 GB
Modbus input	Up to 150 channels	58 channels
Analog sensors	Up to 8	Up to 2
Digital sensors	Up to 8	Up to 2
Relay outputs	Up to 10	2
Power for sensor	50 W (AC version) Up to 150 W (DC Version)	10 W (Compact Version) 50 W (Flex Version)
Configuration	S332 Local Display & S4C Web	S4C Display
FDA 21 CFR Part 11	Yes (audit trail, e-signature, multi-user)	No
Web-Server Remote Access	Supported (remote viewing and operation)	Not supported

Connectivity & Remote Access

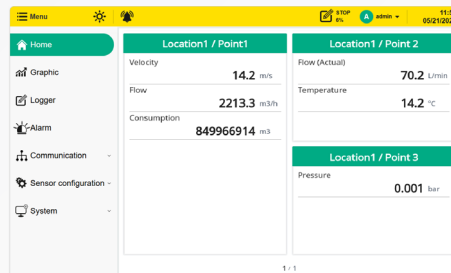
S4C Web

Remote real-time monitoring, online configuration, parameter setting, file export, and browser-based data analysis.



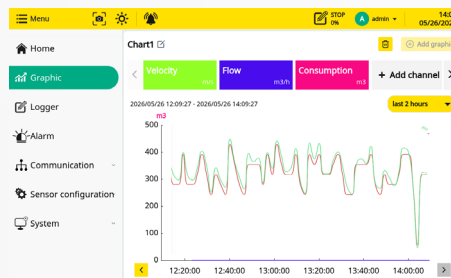
Seamless Connectivity and Management

Real-time monitoring and wireless data transmission via integrated web server for remote access and analysis.



Data Display & Customizable Channel Chart

Supports customizable measurement channels and real-time trend charts for clear and intuitive data visualization.



Data Logger - Export & Analysis

Flexible data logging with automatic recording, file export, and data analysis functions.

Logger name	Start time	Stop time	Operate
<input checked="" type="checkbox"/> S332_log_8	2026-06-23 12:29:49	2026-06-23 12:29:59	[Export] [Delete]
<input checked="" type="checkbox"/> S332_log_7	2026-06-18 16:30:36	2026-06-18 16:48:06	[Export] [Delete]
<input type="checkbox"/> S332_log_6	2026-06-15 11:31:06	2026-06-15 11:32:16	[Export] [Delete]
<input type="checkbox"/> S332_log_5	2026-06-11 16:55:50	2026-06-11 16:57:10	[Export] [Delete]
<input type="checkbox"/> S332_log_4	2026-06-11 08:29:53	2026-06-11 08:41:59	[Export] [Delete]
<input type="checkbox"/> S332_log_3	2026-06-10 15:55:35	2026-06-10 17:25:15	[Export] [Delete]

System memory usage: Used 0.708/25.4GB

Alarm settings & Alarm History

Configurable alarm limits with real-time and historical alarm recording for improved process monitoring and risk control.

Sensor	Channel	Unit	Threshold	Hysteresis	Direction	Delay	Relay	Pending	Action
S401	Velocity	m/s	12	0	Up	0	0	[On] [Off]	[Reset]
S401	Flow	m ³ /h	50	0	Up	0	0	[On] [Off]	[Reset]
S401	Consumption	m ³	10000	0	Up	0	0	[On] [Off]	[Reset]
S401	Flow direction		0	0	Up	0	0	[On] [Off]	[Reset]

Save to Web

Data Monitoring & Visualization

Sensor Integration

Sensor	Description	Address	S/N	Operate
S401	S401	11	00000000	<input type="checkbox"/>
S120_w_display	S120	10	00000000	<input type="checkbox"/>
S402	S402	1	00000000	<input type="checkbox"/>
S040	S040#1	3	00000000	<input type="checkbox"/>
S130	S130	8	00000000	<input type="checkbox"/>
S040	S040	5	00000067	<input type="checkbox"/>

Sensor Connection Options

Modbus/RTU and /TCP Sensor Input

Connect up to 150 Modbus (RTU or TCP) measuring channels. Simple RS-485 installation using the SUTO iTEC daisy-chain splitter; additional power supplies may be needed for long cable runs.

Analog Sensor Input

Optional analog modules support 0...20 mA, 4...20 mA, 0...10 V, 0.5...4.5 V, and pulse signals with up to 8 analog channels. Ideal for sensors without Modbus output.



User profile

Account name:

Account type:

Account comment:

Electronic signature

Import method:

Signature:

Preview:

Electronic Signature

User-based electronic signatures protect files and support data integrity requirements.

Item No	Time	Account	Account type	Operation	Operation object	Operation type	Date before operation
223	2026-06-24 11:10:04	M	Manager	System	Language Change	Language: zh-CN	
222	2026-06-24 11:29:53	M	Manager	Sensor configuration	Delete	Sensor S120_w_dis...	
221	2026-06-24 11:29:40	M	Manager	Graphic	Update	Chart (R1) page...	
220	2026-06-24 09:40:15	admin	Admin	User session	Log in	Log out	
219	2026-06-24 09:40:15	admin	Admin	User session	Log out	Log in	
218	2026-06-24 09:29:46	M	Manager	System	Language Change	Language: en	
217	2026-06-24 09:27:55	M	Manager	User session	Log in	Log out	

Audit Trail

Tamper-proof logging of all user operations with time and operator tracking for full traceability.

Empowering Efficiency and Compliance

Centralized data management with electronic signatures, audit trails, and user access control to support FDA 21 CFR Part 11 compliance.

Multi-User Management

Role-based access with Admin, Operator, Auditor, and Manager accounts for secure system operation.

Compliance & Security

Account name	Account type	Account comment	Activation	Operate
M	Manager		<input checked="" type="checkbox"/>	<input type="checkbox"/>
LI	Operator		<input checked="" type="checkbox"/>	<input type="checkbox"/>
Cal	Auditor		<input checked="" type="checkbox"/>	<input type="checkbox"/>

Technical Data

Signal / Interface & Supply

Input signals

Modbus signal input	<ul style="list-style-type: none"> Modbus/RTU Master Modbus/TCP Master (up to 150 measuring channels)
---------------------	---

Analog input (Optional)	0 ... 20 mA/4 ... 20 mA, 0 ... 10 V/0.5 ... 4.5 V Up to 2 analog input modules, each module has 4 analog input channels.
-------------------------	---

Digital input (Optional)	Up to 2 digital input modules, each module has 4 digital input channels.
--------------------------	--

Output signals

Alarm output	Built-in 2 relays Up to 2 relay modules (optional), each module has 4 relays
--------------	---

Modbus signal output	<ul style="list-style-type: none"> 1 x Modbus/RTU(Slave) 1 x Modbus /TCP
----------------------	--

Data interface

Connection	<ul style="list-style-type: none"> Modbus/TCP Master (Ethernet) Modbus/TCP Slave (Ethernet) Modbus/RTU Master (RS 485) Modbus/RTU Slave (RS 485) USB-C port
------------	--

Power supply

AC version	85 ... 305 VAC, 60W, 50/60Hz
------------	------------------------------

DC version	18 ... 30 VDC, Max. 7 A
------------	-------------------------

Sensor supply

AC version	24 V, max. 50 W
------------	-----------------

DC version	24 V, max. 150 W
------------	------------------

General data

Display

Integrated	7" high-resolution graphic display, Resolution: 1280 x 800 pixels touch screen
------------	--

Data logger

Storage	Internal, 10 GB, 530 days typical (example: 50 channels @ 1s sampling)
---------	--

Material

Housing material	PC + ABS
------------------	----------

Miscellaneous

Protection class	IP65
------------------	------

Dimensions	Panel or wall mounting, see below
------------	-----------------------------------

Cable entry	<ul style="list-style-type: none"> 3 x M20 PG connector (each for 2 cables, Ø5 ... 6 mm) 4 x M12 PG connector (each for 1 cable, Ø5 ... 6 mm)
-------------	---

Installation	Panel or wall mounting
--------------	------------------------

Approvals	CE, FCC
-----------	---------

Weight	1 ... 1.8 kg (depending on the installed options and housing)
--------	---

Environment Data

Operating temperature	0 ... +45 °C
-----------------------	--------------

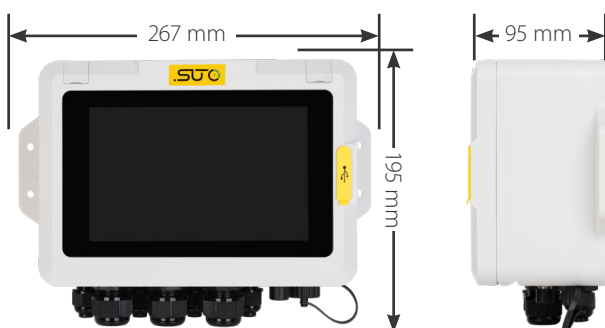
Operating humidity	<90%, no condensation
--------------------	-----------------------

Transportation temperature	-20 ... +60 °C
----------------------------	----------------

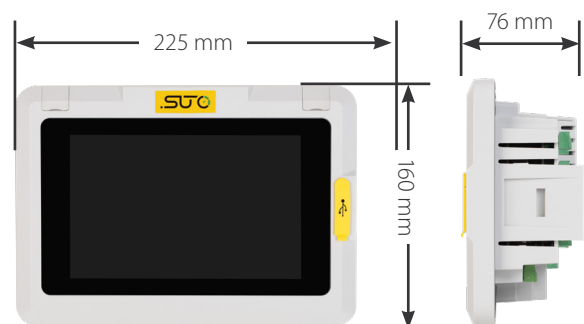
Storage temperature	-20 ... +70 °C
---------------------	----------------

Dimension and Installation

Wall Mounting



Panel Mounting



Ordering

Please use the following tables to assist in placing your order with our sales staff.

S332 Display and Data Logger

Order No. Description

D500 3321	S332 Display, Wall mountable casing, Modbus/RTU (Master & Slave), Modbus/TCP (Master & Slave), 2 Alarm Relays integrated, Power Supply Input: 85 ... 305 VAC
D500 3322	S332 Display, Wall mountable casing, Modbus/RTU (Master & Slave), Modbus/TCP (Master & Slave), 2 Alarm Relays integrated, Power Supply Input: 18 ... 30 VDC
D500 3323	S332 Display, Panel mount version, Modbus/RTU (Master & Slave), Modbus/TCP (Master & Slave), 2 Alarm Relays integrated, Power Supply Input: 85 ... 305 VAC
D500 3324	S332 Display, Panel mount version, Modbus/RTU (Master & Slave), Modbus/TCP (Master & Slave), 2 Alarm Relays integrated, Power Supply Input: 18 ... 30 VDC

Data Logger

A3001	Data Logger, 10 GB Memory, 530 days typical (example: 50 channels @ 1s sampling)
A3002	No Data Logger

Option Slot 1

A3003	Analog Input Module, 4 Channels, Current: 0 ... 20 mA / 4 ... 20 mA
A3004	Analog Input Module, 4 Channels, Voltage: 0 ... 10 V / 0.5 ... 4.5 V
A3005	Digital Input Module, 4 Channels
A3006	Alarm Relay Module, 4 Relays, Rating: 3A 230 VAC / 3A 30 VDC
A3007	No Option in Slot

Option Slot 2

A3003	Analog Input Module, 4 Channels, Current: 0 ... 20 mA / 4 ... 20 mA
A3004	Analog Input Module, 4 Channels, Voltage: 0 ... 10 V / 0.5 ... 4.5 V
A3005	Digital Input Module, 4 Channels
A3006	Alarm Relay Module, 4 Relays, Rating: 3A 230 VAC / 3A 30 VDC
A3007	No Option in Slot

S332 Accessories

Order No. Description

Optional wireless communication

A554 0140	SmartBox Pro, 4G/LTE communication module, upload data to SaaS
A554 0136	WTU-S, Wireless Transmission Unit for stationary installation, Slave (default) / Repeater with 0.5 m M12 connection cable, M12 connector for power supply, all installation accessories included
A554 0137	WTU-S, Wireless Transmission Unit for stationary installation, Master with 1 m open ends, M12 connector for power supply, all installation accessories included

Optional cables and connector

A553 0104	Sensor cable 5 m with M12 connector, open ends, 5 pole, AWG 24 (0.2 mm ²)
A553 0105	Sensor cable 10 m with M12 connector, open ends, 5 pole, AWG 24 (0.2 mm ²)
A553 0165	Sensor cable, 5 pole, AWG 24 (0.2 mm ²), 50 m reel
A553 0166	Sensor cable, 5 pole, AWG 24 (0.2 mm ²), 100 m reel
A553 0167	RS-485 (modbus) cable, 4 pole twisted pairs with shield, AWG 24 (0.2 mm ²), 50 m reel
A553 0168	RS-485 (modbus) cable, 4 pole twisted pairs with shield, AWG 24 (0.2 mm ²), 100 m reel
A554 3310	M12-Splitter, for Modbus Daisy chain wiring, including 2 x M12 plug
C219 0055	M12 connector with RS-485 termination resistor (120 Ω), for Modbus daisy chain termination
A553 0161	M12 male to M8 female converter cable for M12-Splitter
A553 0106	AC Power cable with mains plug, 1.8 m

Converters and gateways*

A554 0011	RS-485 repeater
A554 0331	RS-485 / USB converter
D554 0031	8-channel current input module, 0 ... 20 mA, Modbus/RTU

Ordering Example

Order Code D500 3321.A3001.A3004.A3003

Example S332 AC Version, with Data Logger, with 4 x 0... 10 V input, with 4 x 4 ... 20 mA input

* Please contact our customer service for further converter/gateway options



www.suto-itec.com



sales@suto-itec.com