



# AD21P




Professional Tools For  
Detecting Indoor Leaks



VISIT OUR WEBSITE

## SuperDetect

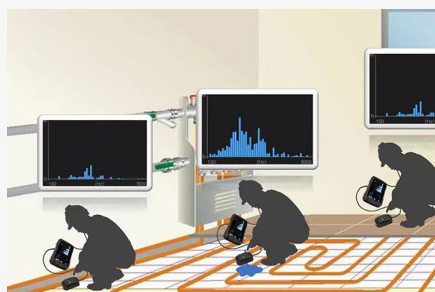
The Intelligent Assistant Revolutionizing Leak Detection

-  Lowering the Technical Barrier for Users
-  Improving Efficiency and Reducing Detection Time
-  Minimizing Errors and Enhancing Accuracy

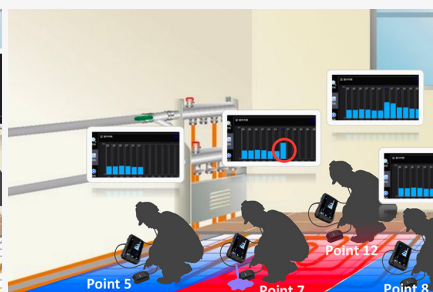


## Two Inspection Modes For Fast Leak Location

With Inspection Mode and Quick Inspection Mode HIKMICRO AD21P can quickly locate the scope of the leakage point, improve the detection efficiency, and reduce the loss caused by leakage.



Quick Inspection Mode



Inspection Mode



Easy To Use,  
More Flexible  
Setting



High Quality  
Listening  
Experience

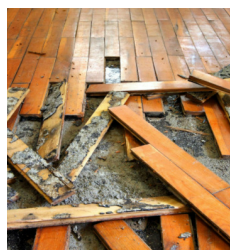


Durable And  
Rechargeable  
Batteries



Four Indoor  
Band  
Pass Filters

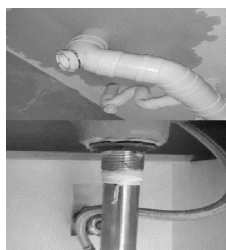
## APPLICATIONS



Leak Under The Floor



Heating Pipes/  
Underfloor Heating  
Pipe Leaks



Water Supply  
Pipe Leakage/  
Water Pipe Leakage



Roofs And Walls,  
Water Seepage In  
The Ground



Fire Sprinkler  
System

## APPLICATIONS



- Main Unit
- Handheld Sensor
- Pick-up Sensor
- Handle grip
- Headset
- Power Supply for Battery Charger
- International Use Plugs (US/EU/UK/AU) for Power Supply (x4)
- USB 2.0 A to USB Type-C Cable
- Pouch
- Quick Start Guide
- Calibration Certificate

Model No	AD21P	
Acoustic	Frequency Range	150~7500Hz
	SuperDetect	Yes
	Amplification	Manual adjustable
	Band Pass Filters	Indoor low-frequency 150Hz to 3000Hz Indoor high-frequency 4500Hz to 7500Hz Indoor mid-frequency 3000Hz to 6000Hz Indoor all-pass 150Hz to 7500Hz
Image Display	Display	1024 × 600 Resolution 7"LCD Touch Screen
	Screen Brightness	Manual/Auto
General	Storage Media	Built-in EMMC(4GB)
	Audio Storage Capacity	Approx. 20 hours, viewable only on PC
	Working Temperature Range	-10 °C to 50 °C (14 °F to 122 °F)
	Drop Test Height	1.2 m(3.93 ft.)
	Battery Type	Rechargeable Li-ion Battery
	Battery Operating Time	≥11h
	Battery Charging Time	4h full charge
	Protection Level	Main Unit:IP40; Hand held sensor:IP54; Pick-up sensor:IP66;