

Temperature transmitter is an integral element of temperature sensor, available also as a separate component. It converts temperature sensor signal to analogue 4+20mA, voltage 0+10V or different signal. Transmitter can be placed directly in connection head or on TS-35mm rail.

Specification

Characteristic

- analogue transmitter
- mounting in connection head BA: APAQ-HCF/HRCX
- mounting on a 35 mm rail: APAQ-LC
- voltage / power transmitter
- manual linearisation of output signal against voltage
- intrinsically safe version APAQ-HCFX, II 1G Ex ia IIB T4-T6

Input / measuring range

Input TC	Range	Min. span
J	0+950	170°C
K	1370	220°C
L	900	165°C
N	1300	290°C
T	400	200°C
voltage	0+50mV	10

Input impedance

> 5 MΩ

Output

4+20 mA

Measuring range

0+50 mV; min. 10 mV

Zero point adjustment

10% of range span

Accuracy

0,5+1% of range, cold junction compensation ±1°C

Response time

0,2 s

Galvanic isolation

not present

Max. loop resistance

$R_L \max = (U_{\text{supply}} - 6,5) / 0,025 \text{ [}\Omega\text{]}$

$R_L \max = (U_{\text{supply}} - 8,5) / 0,025 \text{ [}\Omega\text{]}$ - Ex version

Lead wire connection

< 2,5 mm²

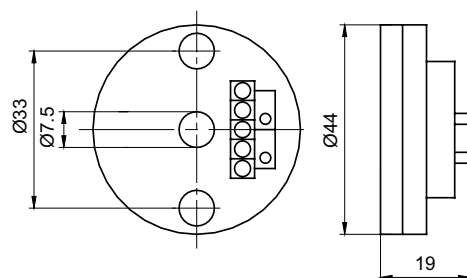
Power supply

6,5+32V DC; 8,5+30V DC Ex version

Operating conditions

temperature: -40+85°C, -20+70°C for APAQ-LC

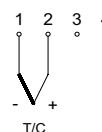
humidity: up 95% RH non-condensing



CONNECTION SCHEMES

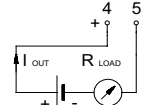
Input connections:

APAQ-HCF/-HCFX/APAQ-LC

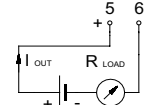


Output connections:

APAQ-HCF/-HCFX



APAQ-LC



Product code

		Transmitters version	
1	□	LC	35mm DIN rail mounted
		HCF	head mounted
		X	Ex version for HCF
		Temperature range	
2	□	(0÷600)°C	(0÷600)°C
			other parameters acc. to requirements
		Input type	
3	□	J	J
		K	K
		L	L
		N	N
		T	T
		voltage	voltage
		Equipment	
4	□	A	with adapter for 35mm rail mounting for APAQ-HCF

1
2
3
4

-

-

-

-

Ordering example: **Transmitter APAQ-HCF-(0÷600)°C-K**