

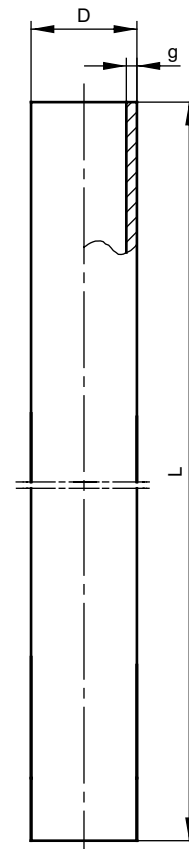
OS-3 protection tube is used with temperature sensor as a replaceable component of the part that deteriorates the most often. It is made of acid-resistant steel. Selection of parameters and design depends on sensor requirements. It is manufactured in accordance with individual client requirements.

Specification

Material*				
heat resistant steel	1.4841:	1150°C		
creep resistant steel	1.4762:	1200°C		
	15Cr25Ti:	1100°C		
Dimensions*				
Material	Dxg			
	10x1	15x2	20x2	22x2
1.4841	X	X	X	X
1.4762	–	X	–	X
15Cr25T	–	–	X	X

Protection tube length L [mm] = 200+3000

*other parameters acc. to requirements



Product code

1	<input type="text"/>	Tube dimension D	
		20	20mm
			other parameters acc. to requirements
2	<input type="text"/>	Protection tube length L	
		1000	1000mm
			other parameters acc. to requirements
3	<input type="text"/>	Material	
		1.4841	creep-resistant steel
			other parameters acc. to requirements

1	2	3
<input type="text"/>	<input type="text"/>	<input type="text"/>

OS-3 – – –

Ordering example:

Protection Tube OS-3–10–300–1.4841