

2X BREAK $\phi 1-1/8$ [28.55] X 30°

SEE BELOW FOR THREAD DETAIL

$3/4$
[19.05]

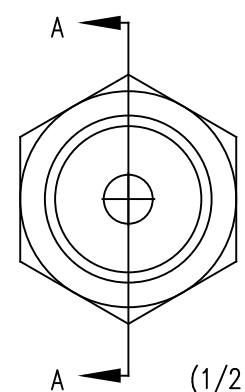
$1 3/4$
[44.45]

$1/4$
[6.35]

$R 1/8$
[R2.29]

$\phi 1/4$
[7.11]

INSERTION
LENGTH



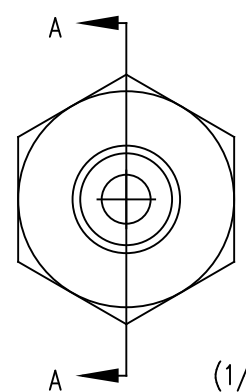
$\phi 1 1/16$
[26.68]

$\phi 3/4$
[19.05]

(1/2 NPT)

(3/4 NPT)

1/2 X 3/4 NPT SERIES THERMOWELL



$\phi 7/8$
[21.34]

$\phi 5/8$
[15.88]

(1/4 NPT)

(1/2 NPT)

1/4 X 1/2 NPT SERIES THERMOWELL

Ⓢ = CRITICAL DIMENSION
STANDARD TOLERANCES UNLESS NOTED:
ALL DECIMAL DIMENSIONS ± .005
ALL ANGLES ± 1°

		DATE 01-07-19	NAME TE-TNS MACHINED THERMOWELLS	MATERIAL
		DWN BY DGH		FINISH
		CHKD KAS		DWYER INSTRUMENTS, INC. MICHIGAN CITY, INDIANA 46360 U.S.A.
		APPD AG		
NO.	CHANGES	BY/DATE	ACAD2002	FR. NO. 720829-00

NOTICE: This drawing and the principles and elements of design embodied therein are the exclusive property of DWYER INSTRUMENTS, INC. and are not to be communicated, disclosed, reproduced or used except as previously authorized in writing by such corporation and must not be submitted to outside parties for examination without the written consent of said corporation.