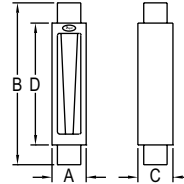


INDUSTRIAL DIRECT READING FLOWMETERS

Air/Water Direct Reading Scale, 304 Stainless Steel Protective Shield

CALIBRATION SERVICES AVAILABLE



DIMENSIONS					
Tube Size	Female NPT	A	B	C	D
1 and 2	1/2"	2 [50.8]	9.54 [242]	2.25 [57.2]	8.04 [204]
3 and 4	1"	3.5 [89]	13.69 [348]	3.75 [95.3]	10.50 [267]
5 and 6	2"	5 [127]	15.59 [396]	5.25 [133]	11.55 [293]

The **Series IF Industrial Direct Reading Flowmeters** are flowmeters that directly measure flow rates up to 116 GPM (439 LPM) for water and 250 SCFM (7080 LPM) for air service.

BENEFITS/FEATURES

- Direct read scales with no need for correlation charts saves time
- Detachable, clear 3/16" thick polycarbonate front shield provides protection at maximum rated temperature and pressure

APPLICATIONS

- Gas or liquid metering
- Industrial pneumatic or hydraulic systems

MODEL CHART

Model	Maximum Flow Rate		Tube Size	Press. Drop (in H ₂ O)	Model	Maximum Flow Rate		Tube Size	Press. Drop (in H ₂ O)	Model	Maximum Flow Rate		Tube Size	Press. Drop (in H ₂ O)
	Water GPM (LPM)	Air SCFM (LPM)				Water GPM (LPM)	Air SCFM (LPM)				Water GPM (LPM)	Air SCFM (LPM)		
IF2700	0.25 (0.95)	1.2 (35)	1	-	IF2708	6 (20)	25.5 (725)	4	5	IF2716*	41 (155)	160 (4531)	6	5
IF2701	0.36 (1.3)	1.7 (50)	1	2	IF2709	7.4 (27.5)	30 (900)	4	6	IF2717*	44 (167)	180 (5098)	5	30
IF2702	0.76 (3.0)	3.3 (90)	1	5	IF2710	9.6 (35)	40 (1200)	4	10	IF2718*	60 (227)	245 (6938)	6	16
IF2703	1 (3.7)	4.2 (120)	2	6	IF2711	11 (40)	47.5 (1400)	4	13	IF2719*	61 (231)	250 (7080)	5	40
IF2704	1.5 (5.6)	6.5 (180)	2	-	IF2712	14 (50)	62 (1800)	4	24	IF2720*	86 (326)	-	6	25
IF2705	2.2 (8.2)	8.5 (250)	2	10	IF2713	20 (75)	90 (2600)	4	39	IF2721*	116 (439)	-	6	45
IF2706	3.8 (14)	16 (475)	3	10	IF2714*	22 (83)	90 (2550)	5	16					
IF2707	5 (18)	21.5 (650)	3	14	IF2715	26 (98)	-	4	70					

*NIST not available.

OPTIONS

Use order code:	Description
NISTCAL-FL1	NIST traceable calibration certificate for variable air flowmeters
NISTCAL-FL2	NIST traceable calibration certificate for variable water flowmeters

SPECIFICATIONS

Service: Liquids or gases.
Wetted Materials: Flowtube: Borosilicate glass; float, guide rods, float stops, end; Fittings: 316 SS; O-rings: Fluoroelastomer.
Temperature Limit: 200°F (93°C).
Pressure Limit: 200 psi (13.8 bar); 125 psi for tube size 5 and 6.

Accuracy: ±3% of FS.
Repeatability: ±0.5% of FS.
Turn-Down Ratio: 10:1.
Scale: Dual scale GPM and SCFM.
Process Connection: See table.
Mounting: Vertical.
Front Shield: Polycarbonate.
Side Panels: 304 SS.