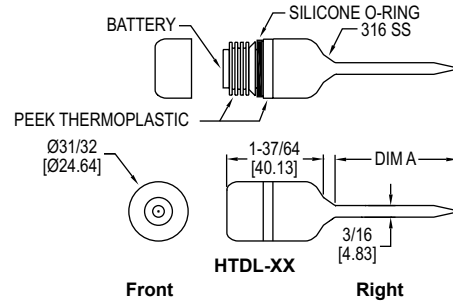




Series HTDL-20/30 High Temperature Data Logger

Specifications - Installation and Operating Instructions



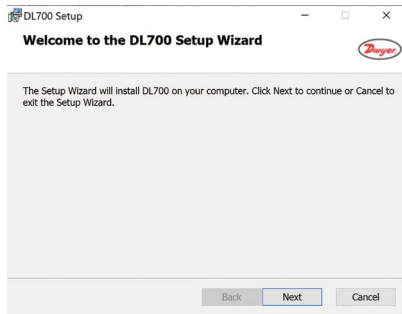
The **Series HTDL-20/30 High Temperature Data Logger** can measure temperatures up to 500°F (260°C). This submersible and portable data logger can record up to 65,536 measurements and has a 2 inch rigid external probe to ensure fast and accurate temperature readings. The HTDL-20/30 contains non-volatile solid state relay memory that will retain data even if the battery becomes discharged. The HTDL-20/30 can easily be started and stopped from a PC or delayed to start up to 18 months after initialization.

NOTICE

Before the device is submerged, screw on the cap tightly to make sure that the logger is properly sealed.

SOFTWARE INSTALLATION

1. Download at www.dwyer-inst.com from the software tab on the product page.



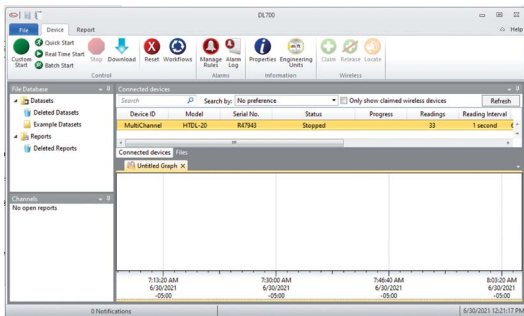
2. Follow onscreen instructions.
3. Click Install.

NOTICE

A message may appear stating that the software has not passed Windows Logo Testing. This software has been tested and works properly. Click Continue anyway if this window appears.

CONNECT THE LOGGER

1. Place Data Logger into the Model HTDL-DS docking station.
2. Insert one end of the cable into the docking station and the other end into the PC.



SPECIFICATIONS

Range: -328 to 500°F (-200 to 260°C).

Memory Size: 65,536 readings.

Accuracy: 0.18°F (0.1°C) @ 68 to 284°F (20 to 140°C); 0.54°F (0.3°C) @ -4 to 67.98°F (-20 to 19.99°C); 0.72°F (0.4°C) @ -40 to -4°F (-40 to -20°C).

Resolution: 0.02°F (0.01°C).

Temperature Limits: -40 to 284°F (-40 to 140°C).

Sampling Method: Stop on memory full or continuous recording.

Sampling Rate: Selectable from 1 s to 24 hrs.

Computer Requirements: Windows XP SP3 or later.

Power Requirements: 3.6 V 1/2 AA ER14250SM lithium metal battery, installed functional, user replaceable.

Battery Life: 1 year (approx).

Interface: Docking station and USB cable.

Housing Material: 316 SS.

Weight: 4.2 oz (120 g).

START THE LOGGER

1. To start a configured run, select custom start in the device tab.
2. From the menu choose the desired Reading Rate, the preferred method for starting the logger and the alarm settings.
3. Click the start button.
4. The logger will stop recording when the device is full or when Stop Device is selected.

DOWNLOAD DATA

1. To download data, connect the logger to the PC.
2. From the Device tab, select download.
3. Data is presented graphically and can be exported to Excel for further analysis under report options.

NOTICE

Starting the device erases all data currently stored in the logger.

Note: For more information on using the HTDL-DS software, please consult the Software Manual.

BATTERY

The battery is user replaceable, and the typical battery life is 1 year. To replace the battery, unscrew the bottom of the data logger and remove the old battery. Insert the new battery and screw the cap back on. Make sure the cap is on tight before submersing the data logger. Fast logging will considerably shorten the battery life. To preserve battery life, it is recommended to use the longest practical sampling rate, and when the logger is not in use, select Stop Device from the Device menu.

MAINTENANCE/REPAIR

Upon final installation of the Series HTDL-20/30, no routine maintenance is required. The Series HTDL-20/30 is not field serviceable and should be returned if repair is needed. Field repair should not be attempted and may void warranty.

WARRANTY/RETURN

Refer to "Terms and Conditions of Sales" in our catalog and on our website. Contact customer service to receive a Return Goods Authorization number before shipping the product back for repair. Be sure to include a brief description of the problem plus any additional application notes.

Windows® is a registered trademarks of Microsoft Corporation.