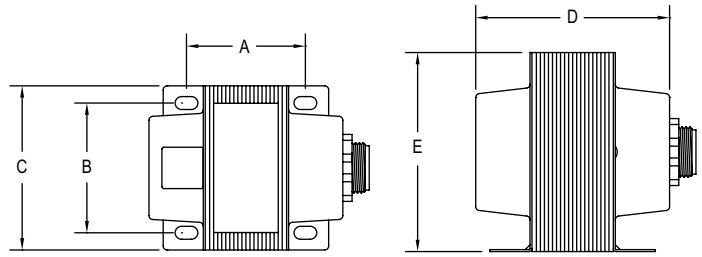
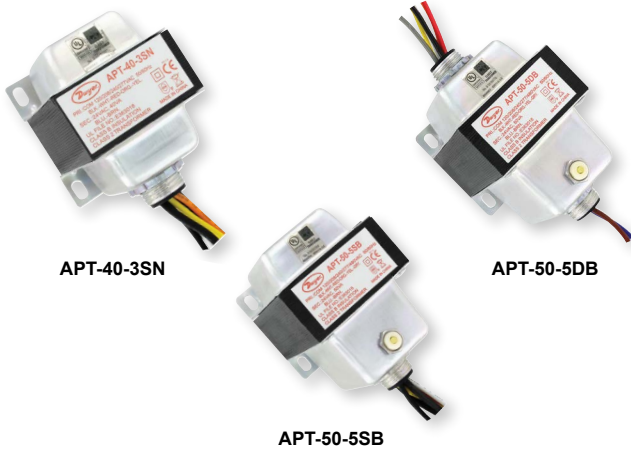


AC POWER TRANSFORMERS

20 to 150 VA, Single or Dual Hub, Circuit Breaker, UL Class 2



Model	Dimensions in [mm]				
	A	B	C	D	E
APT-20-0SN	1-31/64 [37.6]	1-21/32 [41.9]	1-7/8 [47.5]	2-17/64 [57.4]	2-39/64 [66.2]
APT-20-1SN	1-31/64 [37.6]	1-21/32 [41.9]	1-7/8 [47.5]	2-17/64 [57.4]	2-39/64 [66.2]
APT-40-3SN	1-61/64 [49.5]	1-25/32 [45.2]	2-11/64 [55.0]	2-43/64 [68.0]	2-7/8 [73.0]
APT-40-5DN	1-61/64 [49.5]	1-25/32 [45.2]	2-11/64 [55.0]	2-3/4 [70.0]	2-7/8 [73.0]
APT-50-5DB	1-13/16 [46.0]	1-31/32 [50.2]	2-1/2 [63.5]	3-7/16 [87.1]	3-1/32 [77.0]
APT-50-5SB	1-13/16 [46.0]	1-31/32 [50.2]	2-1/2 [63.5]	3-7/16 [87.1]	3-1/32 [77.0]
APT-75-5DB	2-13/64 [56.0]	1-31/32 [50.2]	2-1/2 [63.5]	3-53/64 [97.1]	3-1/32 [77.0]
APT-75-5SB	2-13/64 [56.0]	1-31/32 [50.2]	2-1/2 [63.5]	3-53/64 [97.1]	3-1/32 [77.0]
APT-100-5DB	2-39/64 [66.0]	1-31/32 [50.2]	2-1/2 [63.5]	4-1/4 [107.1]	3-1/32 [77.0]
APT-100-5SB	2-39/64 [66.0]	1-31/32 [50.2]	2-1/2 [63.5]	4-1/4 [107.1]	3-1/32 [77.0]
APT-150-1DB	2-33/64 [64.0]	1-31/32 [50.2]	2-1/2 [63.5]	3-9/16 [90.5]	3-1/32 [77.0]

The Series APT AC Power Transformers provide isolated step-down to 24 VAC with models offering VA ratings of 20, 40, 50, 75, 96, or 150 VA's. These cost efficient transformers are offered in single or dual 1/2" NPT threaded hub mounts with 8-1/2" 18 AWG wire leads, to meet the installation requirements of a variety of building automation and control panel applications in HVAC. All models are UL Class 2 listed.

BENEFITS/FEATURES

- Single or dual 1/2" NPT
- Universal supply voltage input
- With or without integral circuit breaker

APPLICATIONS

- BAS
- HVAC

SPECIFICATIONS

Input Voltage: See model chart.
Input Frequency: 50/60 Hz.
Output Voltage: See model chart.
Output VA Rating: 20, 40, 50, 75, 96, or 150 VA.
Mounting: Slotted foot mount with single, or dual 1/2" NPT hub.
Current Protection: See model chart.
Electrical Connections: Models ending in -20: 20" (508 mm) 18 AWG leads; All other models: 8.5" (210 mm) 18 AWG leads.
Weight: See model chart.
Compliance: CE, cULus.

MODEL CHART

Model	Rating	Input Voltage	Output Voltage	Mounting	Current Protection	Wiring
APT-20-0SN	20 VA	24 VAC	24 VAC	Foot mount with single hub	Inherent	Diagram B
APT-20-1SN	20 VA	120 VAC	24 VAC	Foot mount with single hub	Inherent	Diagram A
APT-40-0SN	40 VA	24 VAC	24 VAC	Foot mount with single hub	Inherent	Diagram B
APT-40-1DN	40 VA	120 VAC	24 VAC	Foot mount with dual hub	Inherent	Diagram A
APT-40-1SN	40 VA	120 VAC	24 VAC	Foot mount with single hub	Inherent	Diagram A
APT-40-2DN	40 VA	240 VAC	24 VAC	Foot mount with dual hub	Inherent	Diagram C
APT-40-2SN	40 VA	240 VAC	24 VAC	Foot mount with single hub	Inherent	Diagram C
APT-40-3SN	40 VA	120/208/240/277 VAC	24 VAC	Foot mount with single hub	Inherent	Diagram D
APT-40-5DN	40 VA	120/208/240/277/480 VAC	24 VAC	Foot mount with dual hub	Inherent	Diagram C
APT-50-1DB	50 VA	120 VAC	24 VAC	Foot mount with dual hub	Button circuit breaker	Diagram A
APT-50-1DN	50 VA	120 VAC	24 VAC	Foot mount with dual hub	Inherent	Diagram A
APT-50-1SB	50 VA	120 VAC	24 VAC	Foot mount with single hub	Button circuit breaker	Diagram A
APT-50-1SN	50 VA	120 VAC	24 VAC	Foot mount with single hub	Inherent	Diagram A
APT-50-2DB	50 VA	240 VAC	24 VAC	Foot mount with dual hub	Button circuit breaker	Diagram C
APT-50-2DN	50 VA	240 VAC	24 VAC	Foot mount with dual hub	Inherent	Diagram C
APT-50-2SB	50 VA	240 VAC	24 VAC	Foot mount with single hub	Button circuit breaker	Diagram C
APT-50-2SN	50 VA	240 VAC	24 VAC	Foot mount with single hub	Inherent	Diagram C
APT-50-5DB	50 VA	120/208/240/277/480 VAC	24 VAC	Foot mount with dual hub	Button circuit breaker	Diagram C
APT-50-5SB	50 VA	120/208/240/277/480 VAC	24 VAC	Foot mount with single hub	Button circuit breaker	Diagram C
APT-75-1DB	75 VA	120 VAC	24 VAC	Foot mount with dual hub	Button circuit breaker	Diagram A
APT-75-1SB	75 VA	120 VAC	24 VAC	Foot mount with single hub	Button circuit breaker	Diagram A
APT-75-2DB	75 VA	240 VAC	24 VAC	Foot mount with dual hub	Button circuit breaker	Diagram C
APT-75-2SB	75 VA	240 VAC	24 VAC	Foot mount with single hub	Button circuit breaker	Diagram C
APT-75-5DB	75 VA	120/208/240/277/480 VAC	24 VAC	Foot mount with dual hub	Button circuit breaker	Diagram C
APT-75-5SB	75 VA	120/208/240/277/480 VAC	24 VAC	Foot mount with single hub	Button circuit breaker	Diagram C
APT-100-1DB	96 VA	120 VAC	24 VAC	Foot mount with dual hub	Button circuit breaker	Diagram A
APT-100-1DB-20	100 VA	120 VAC	24 VAC	Foot mount with dual hub	Button circuit breaker	Diagram A
APT-100-1SB	96 VA	120 VAC	24 VAC	Foot mount with single hub	Button circuit breaker	Diagram A
APT-100-2DB	100 VA	240 VAC	24 VAC	Foot mount with dual hub	Button circuit breaker	Diagram C
APT-100-2SB	100 VA	240 VAC	24 VAC	Foot mount with single hub	Button circuit breaker	Diagram C
APT-100-5DB	100 VA	120/208/240/277/480 VAC	24 VAC	Foot mount with dual hub	Button circuit breaker	Diagram C
APT-100-5SB	100 VA	120/208/240/277/480 VAC	24 VAC	Foot mount with single hub	Button circuit breaker	Diagram C
APT-150-1DB	150 VA	120 VAC	24 VAC	Foot mount with dual hub	Button circuit breaker	Diagram A

Power Transformers

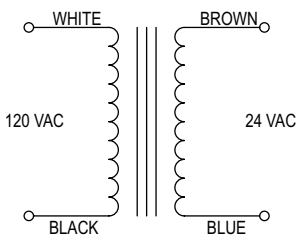


Diagram A

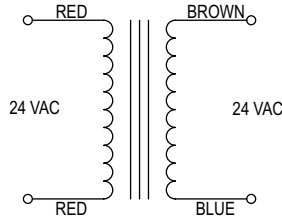


Diagram B

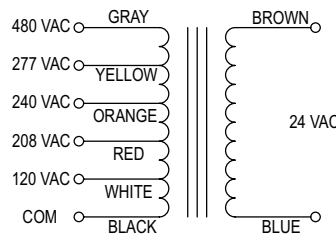


Diagram C

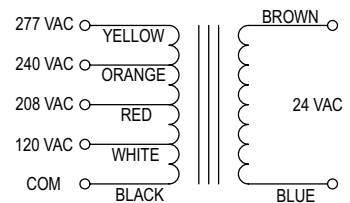


Diagram D